

State of Wyoming Corner Record

(In compliance with the **CORNER PERPETUATION AND FILING ACT**, Wyoming Statutes, 1997 Section 33-29-140 et. se., and the Rules and Regulations of the Board of Professional Engineers and Professional Land Surveyors)

Reverse side of this form may be used if more space is needed.

Record of original survey and citation of source of historical information (if corner is lost or obliterated). Description of corner monumentation evidence found and/or monument and accessories established to perpetuate the location of this corner. Sketch of relative location of monument, accessories, and reference points with course and distance to adjacent corner(s) (if determined in this survey). Method and rationale for re-establishment of lost or obliterated corner.

RECORD: Corner record by R.L. Hudson on Dec. 21, 1977, set a 2.0 inch aluminum cap on 5/8x24 inch rebar.

FOUND: 2.0 inch aluminum cap on 5/8 inch rebar buried 1.2 feet below dirt road.

Re-monumentation: set P-K nail and washer marked with 'PLS#5297 Ref. Point' in fence posts at 39.3 ft. N.E. and 42.7 ft. S.E.

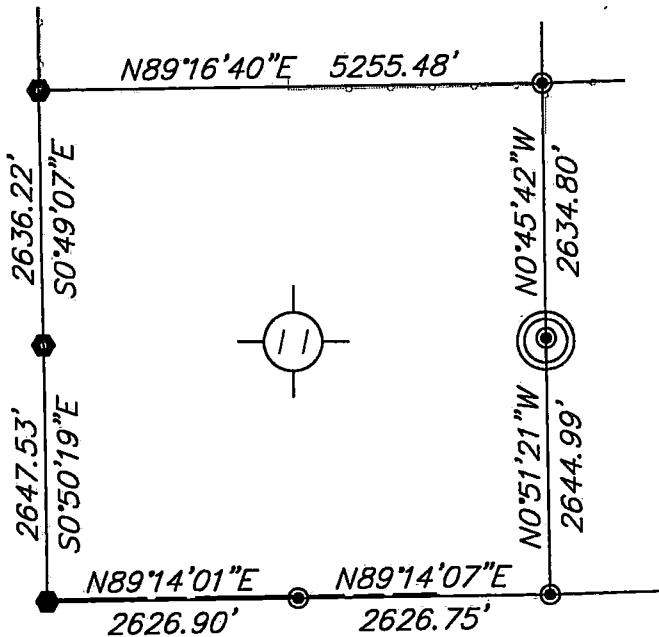
NAD83, position:

Point #	North	East	Elev.
1761113	349485.41	934628.35	5399.10

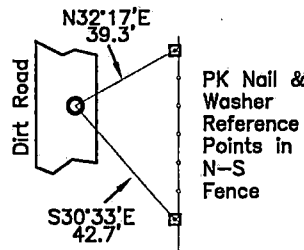
NOTE:
BEARINGS AND DISTANCES SHOWN HEREON ARE
BASED UPON GRID USING NAD83 WYOMING EAST
ZONE AND TRIMBLE R8 GPS OBSERVATION

Monument Location

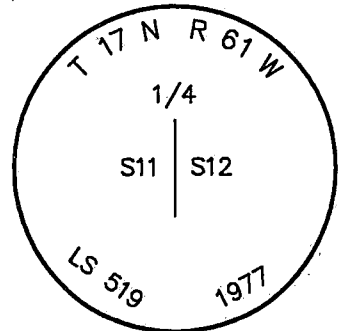
corner referenced this record =



SKETCH



LARAMIE COUNTY



Monument Inscription

Date of Field Work: May 2, 2019

Office Reference: DRG-21814, Pt.1761113

Cross Index Plat

	1	2	3	4	5	6	7	8	9	10	11	12	13	14	15	16	17	18	19	20	21	22	23	24	25		
A																											A
B		6	5	4	3	2	1																				B
C																											C
D																											D
E																											E
F																											F
G		7	8	9	10	11	12																				G
H																											H
J																											J
K																											K
L		18	17	16	15	14	13																				L
M																											M
N																											N
O																											O
P		19	20	21	22	23	24																				P
Q																											Q
R																											R
S																											S
T		30	29	28	27	26	25																				T
U																											U
V																											V
W																											W
X		31	32	33	34	35	36																				X
Y																											Y
Z																											Z
	1	2	3	4	5	6	7	8	9	10	11	12	13	14	15	16	17	18	19	20	21	22	23	24	25		

Firm/Agency, Address

this corner record provided by:

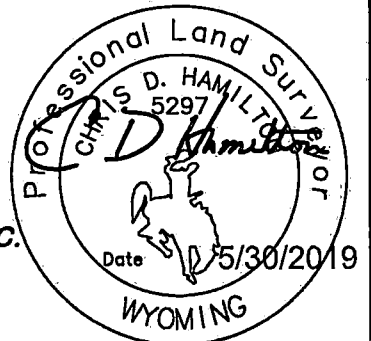
**HAMILTON
LAND
SURVEYING**

UNDER CONTRACT TO:



RIFFIN & ASSOCIATES, INC.
1414 ELK ST., SUITE 202
ROCK SPRINGS, WY 82901
(307) 362-5028

This corner record was prepared by me or under my direction and supervision.
SEAL & SIGNATURE



Debra Lee
County Clerk

Deputy

STATE of WYOMING, Office of Clerk & Recorder, County of Laramie
this block provided for county filing documentation

Corner Name: East 1/4 , Section: 11 , T. 17N , R. 61W , 6th P.M. , Cross-Index No.: G-21

SBRPEPLS/PLSW: March 1994; PLSW January 1998

County: LARAMIE , Wyoming